

Company Profile



Delta Marine Consultants Headoffice
H.J. Nederhorststraat 1
2801 SC Gouda
The Netherlands
Tel. +31 182 590 610
dmc@dmc.nl
www.dmc.nl

Delta Marine Consultants Singapore Pte. Ltd.
51 Changi Business Park Central2 #07-12
The Signature
Singapore 486066
Tel. +65 6294 3033
info-singapore@dmc.nl

PT Delta Marine Consultants
Citra Gran RCW2 No.15
Jl. Alternatif Cibubur KM. 4
Bekasi 17435 Indonesia
Tel. +61 8 9483 5300
dmc@dmc.nl

Delta Marine Consultants (DMC) is an innovative Dutch Engineering Consultant, founded in 1987. DMC has extensive experience in all projects phases from pre-investment advice, concept development to detailed construction designs. DMC is capable of supporting the client throughout the implementation and operation process and to manage a multi-disciplinary team towards tailored solutions.

DMC has strong links with its parent company Royal BAM group, one of the largest European construction companies. Operating as an independent consultant, DMC offers practicable and economic design solutions, adhering to strict safety requirements whilst having a strong history of innovative functional design, maximizing benefit to the client.

DMC is a registered consultant with the major world funding organizations and with many bilateral aid organizations. Our clients include governments, port authorities, industrial companies, contractors and private customers. Many DMC engineers serve on councils and committees of professional organizations for research and technical standards, both in the Netherlands and elsewhere around the world.



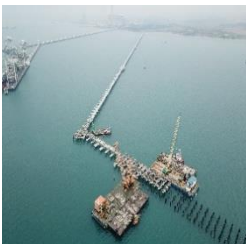
Disciplines

We have in excess of 480 competent and committed employees, many of whom have been with the company for more than ten years. The range of skills includes civil, structural, coastal and geotechnical engineering together with other specialist groups. The multidisciplinary design teams are supported by a proficient CAD/BIM department to ensure full integration of 3D modelling and the latest BIM including 4D and 5D modelling.



About 60% of the DMC staff are closely connected to the disciplines of maritime structures and coastal engineering. The mix of young, excellently educated engineers and senior specialists enables a fresh and dedicated approach towards challenging tasks.

DMC demands and encourages regular professional development including internal and external seminars with focus on engineering sciences and management skills. The company utilized the latest professional design and modelling packages and develops its own special in-house software for design and engineering applications.



Close to our Clients

DMC holds overseas offices strategically located in Singapore and Cibubur to enhance direct customer liaison and for support to project teams operating in the regions.

Project teams are regularly formed by staff from different DMC branches to optimally serve the client's needs. DMC organizes the exchange of employees between branches and head office on a regular basis to follow internal Professional Development goals and to promote teamwork.



DMC has provided consultancy services all over the world. Besides our core business regions, we are vibrantly exploring new markets and areas.

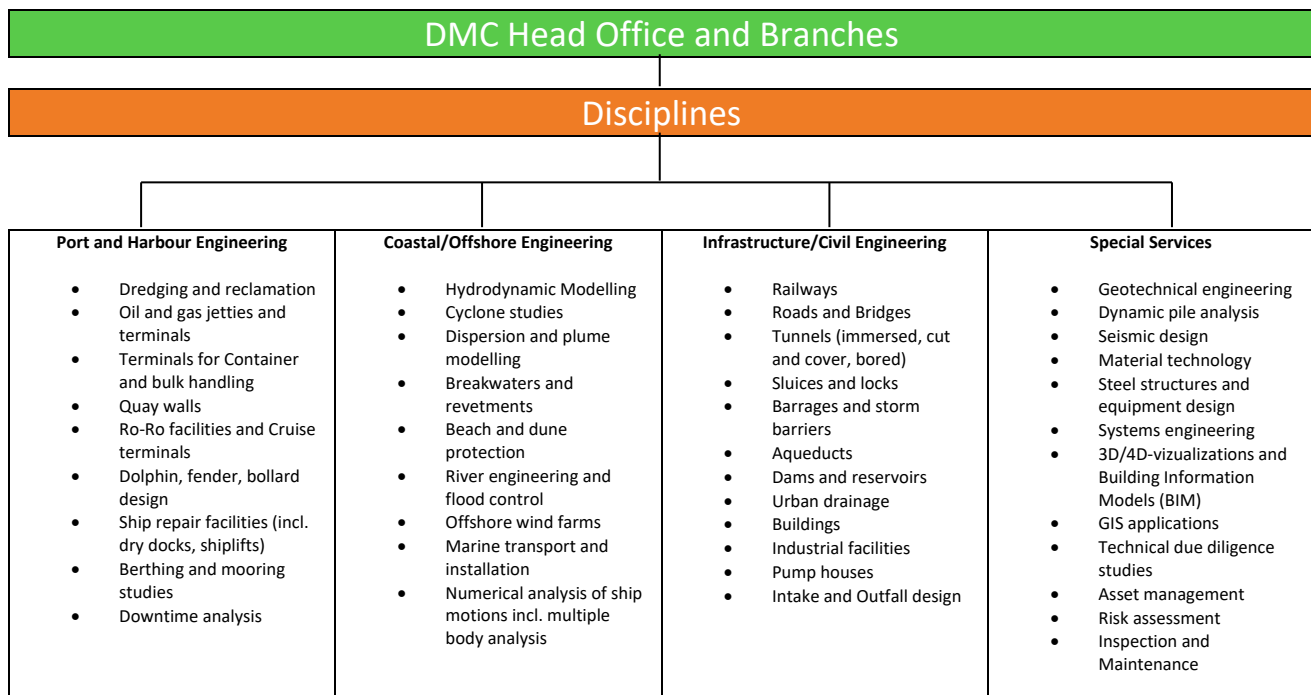
Quality of work

Our organization and processes are regularly assessed by accredited Certification Bodies, including ISO 9001. In the Netherlands BAM group us amongst the highest ranking companies in respect of clients satisfaction reflected by our work quality, safety, proactivity, environment, interruption management and budget control.



Safety by design

Safety at work ranks high on the priority list of DMC. Safety plays an essential role in all activities performed by the organization. DMC's vast experience in construction design includes all kinds of temporary works. Combined with direct and frequent feedback from construction sites, DMC has built up the required knowledge and awareness to proactively ensure the thorough consideration of safety aspects at earliest design stage. Purpose-built BAM safety applications, regular BAM world safety days and quarterly meetings emphasize the constant presence and significance of safety aspects within the BAM group.



Financial

Turnover (Euro Million)	
2019	64
2018	66
2017	66
2016	66
2015	52
2014	43
2013	50
2012	40
2011	35
2010	30
2009	25

General Contractors

Oil and Gas Industry

Oil and Chemicals

Terminal Operators

Government

Storage

Agencies/Port

Authorities



US Army Corps
of Engineers®



DP WORLD

